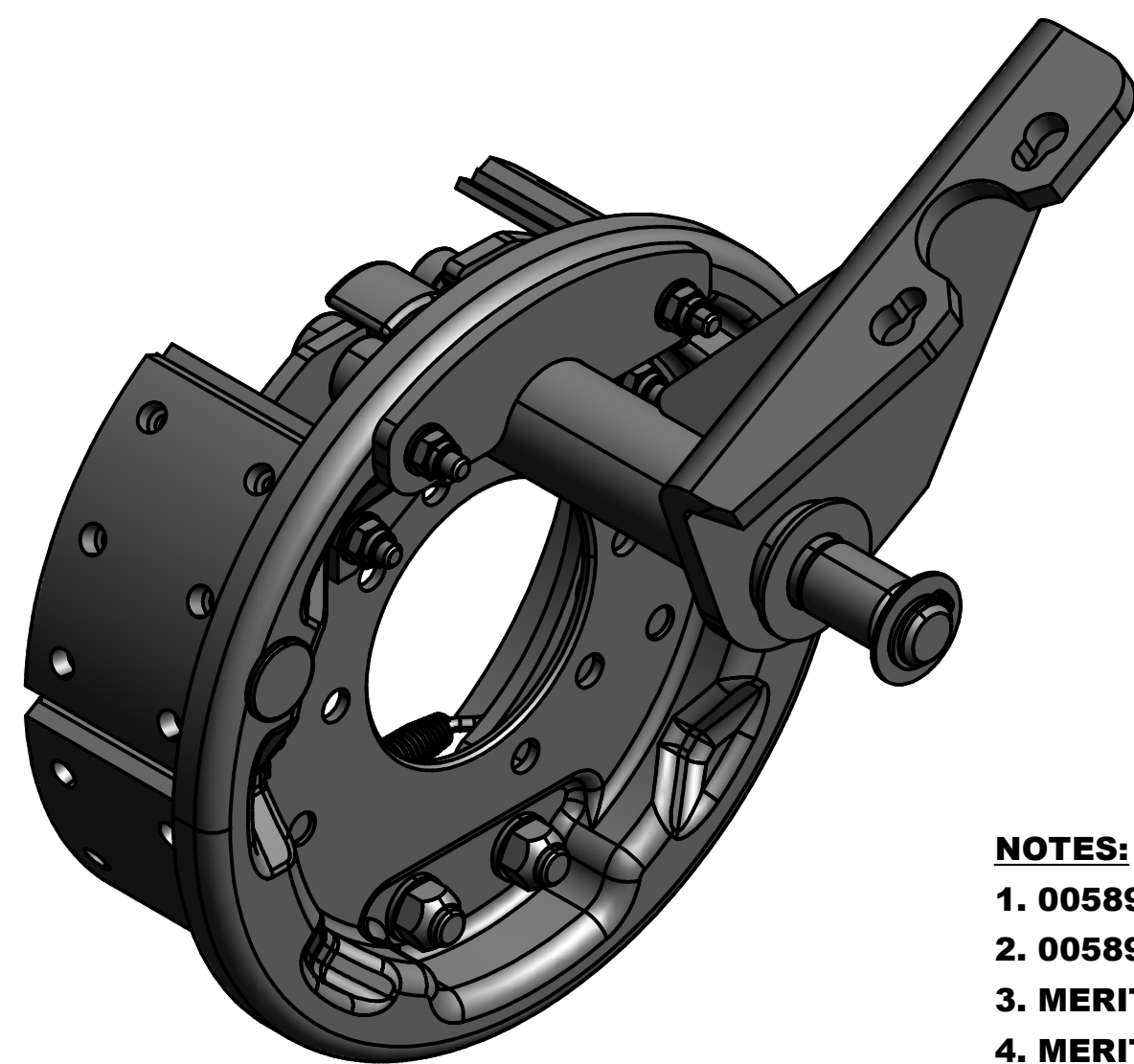
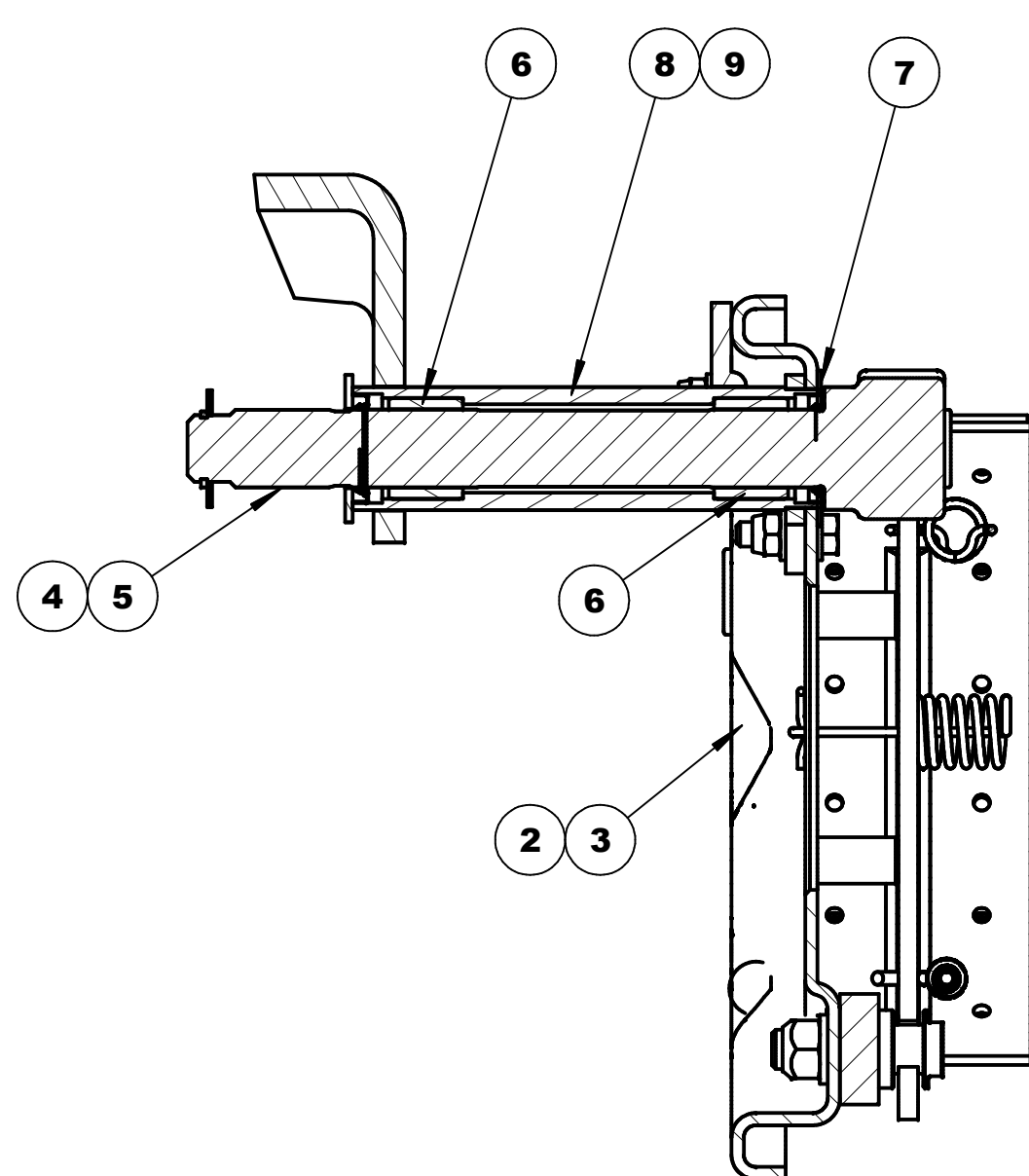


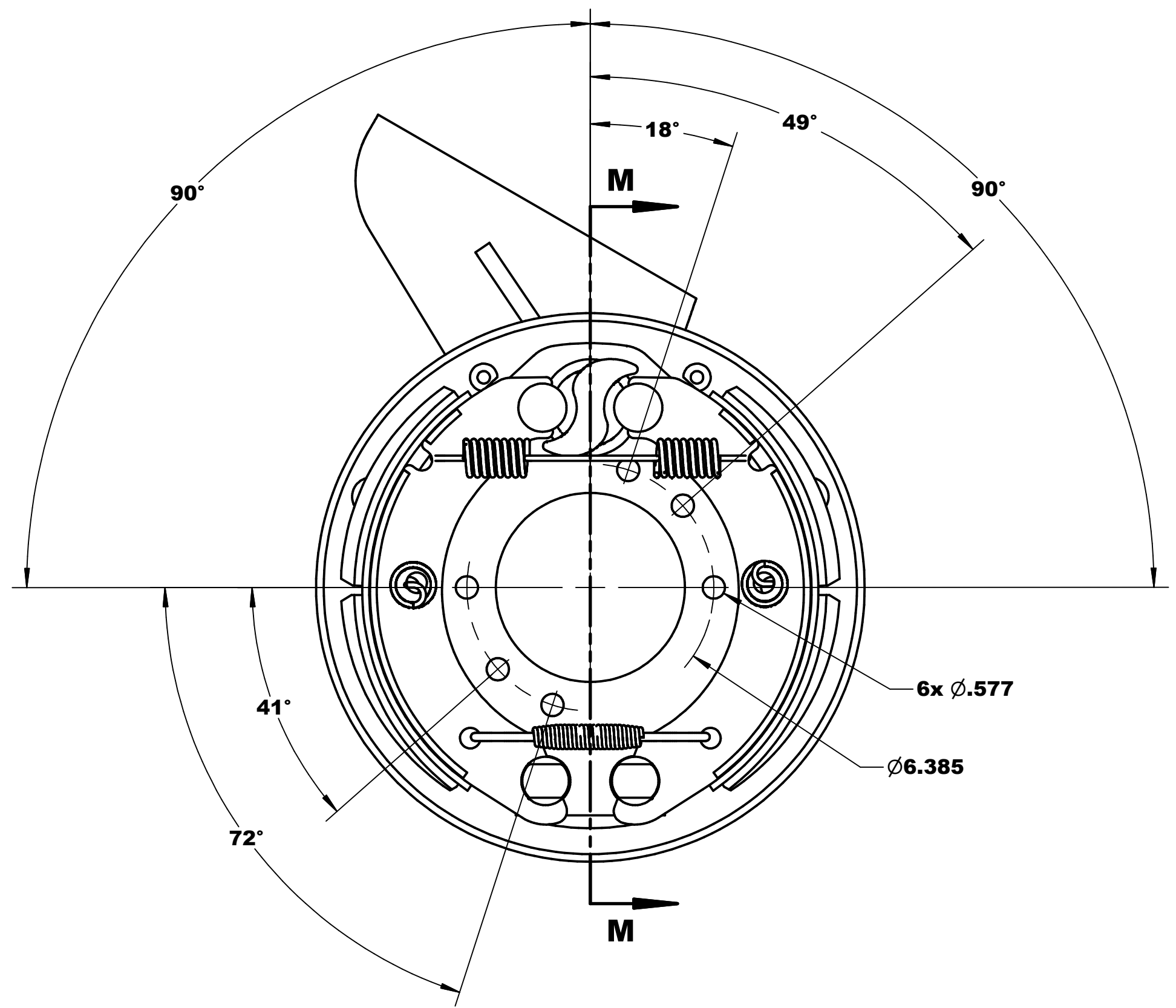
005896.idw, 10/29/2014 4:25:37 PM, Fit to Page



- NOTES:**
1. 005896-1 (SHOWN)
  2. 005896-2 (OPPOSITE HAND)
  3. MERITOR PART #: Q6-32510-1167L (LEFT HAND - SHOWN)
  4. MERITOR PART #: Q6-32510-1168R (RIGHT HAND)
  5. WEIGHT: 43.0 LBS.



**SECTION M-M**  
**SCALE 1/3**



This print remains the property of Hendrickson. All information contained therein is confidential. It is loaned, subject to return on demand and on the expressed condition that it may not be copied or used for any other purpose than for which it was loaned.	UNLESS OTHERWISE NOTED TOLERANCES ARE: .X: +/- .1 .XX: +/- .06 .XXX: +/- .030 ANGULAR: +/- .5 TORQUE: +10% - 0%	DRAWN BY: S.MASSA	DATE: 9/23/2004	DRAWING No. 005896	REVISION 1	
		CHECKED BY: D.HUTCHISON	TITLE BRAKE, 325 x 100			
DIMENSIONS ADHERE TO ANSI Y14.5M-1982		APPROVED BY: M.DANKOW	MODIFIED BY: T.EDWARDS	DATE: 7/26/2007	ECN No. H3945	PAGE 1 OF 1
WELDS CONFORM TO AWS D1.1		ASSEMBLY NUMBER: 005896			-1	-2

ITEM	PART NO.	VEND. PART NO.	DESCRIPTION	QTY.	QTY.
1	006097	RKIT6005D1	QC BRAKE SHOE KIT	1	1
2	007763-1	A3236FM80	BACKING PLATE ASSY. SHO	1	-
3	007763-2	A3236FM81	BACKING PLATE ASSY. OPP	-	1
4	007764-1L	2210FM391	CAMSHAFT "S" HEAD SHO	1	-
5	007764-1R	2210FM392	CAMSHAFT "S" HEAD OPP	-	1
6	007765	KIT 8022	S-CAM BUSHING KIT	1	1
7	007766	1229B236	WASHER-CAMHEAD FLAT	1	1
8	007767-1	FM98 3299Y6837	CHAMBER BRACKET SHO	1	-
9	007767-2	FM98 3299Y6838	CHAMBER BRACKET OPP	-	1

REVISION HISTORY					
ZONE	REV	DESCRIPTION	DATE	ECN	REV.BY
N/A	1	ADDED PARTS LIST & DIMENSIONS	7/26/2007	H3945	TAE